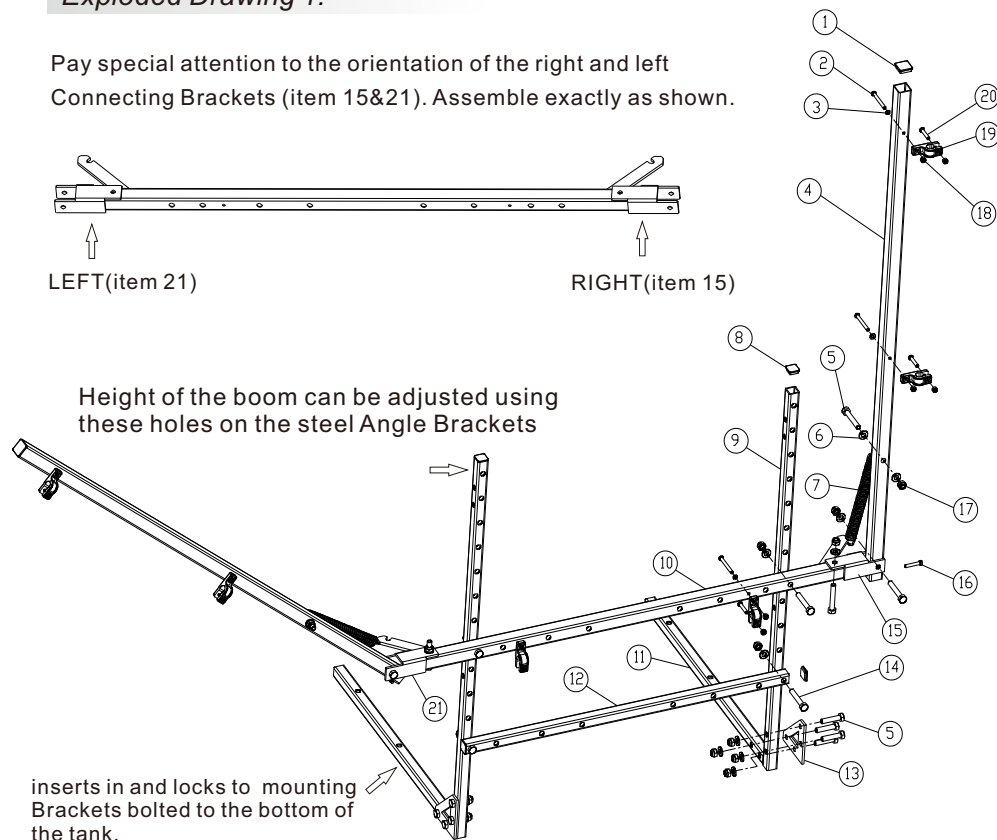
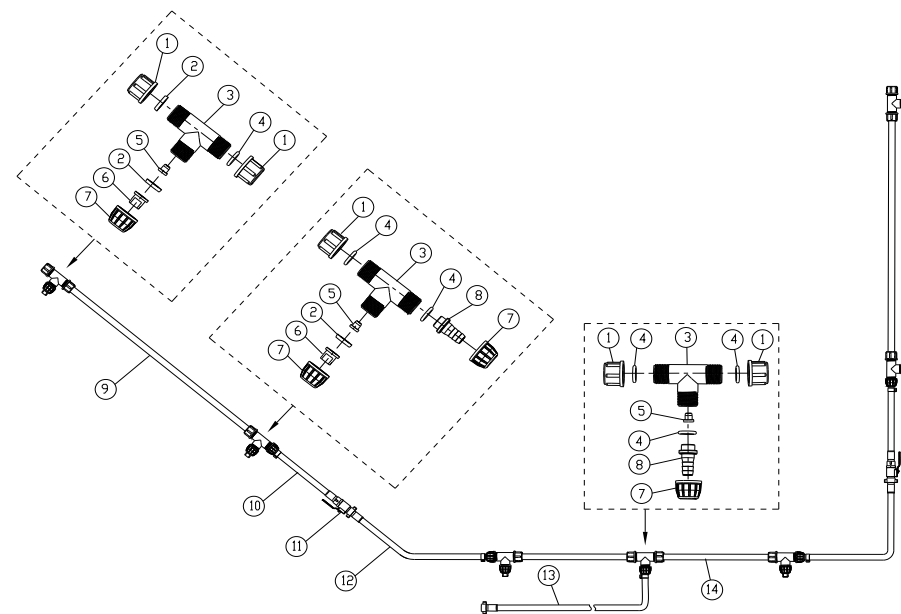


Exploded Drawing 1:

Pay special attention to the orientation of the right and left Connecting Brackets (item 15&21). Assemble exactly as shown.

**WS207G Bill of Materials (BOM)****Parts List**

ITEM	QTY	PART NUMBER	DESCRIPTION	ITEM	QTY	PART NUMBER	DESCRIPTION
1	2	WS207G-01	Square cap 25x25mm	12	1	WS207G-12	Foot square pipe 3
2	6	WS207G-02	PM4*35mm screw	13	2	WS207G-13	Foot fix
3	6	WS207G-03	M4 pad	14	4	WS207G-14	M8*55mm screw
4	2	WS207G-04	Side square pipe	15	1	WS207G-15	Right connect
5	14	WS207G-05	M8*40mm screw	16	2	WS207G-16	M5*28mm screw
6	18	WS207G-06	M8 pad	17	18	WS207G-17	M8 nut
7	2	WS207G-07	Spring	18	12	WS207G-18	M4 nut
8	4	WS207G-08	Square cap 20x20mm	19	6	WS207G-19	Pipe support
9	2	WS207G-09	Foot square pipe 1	20	6	WS207G-20	PM4*20mm screw
10	1	WS207G-10	Middle square pipe	21	1	WS207G-21	Left connect
11	2	WS207G-11	Foot square pipe 2				

Exploded Drawing 2:**WS207G Bill of Materials (BOM)****Parts List**

ITEM	QTY	PART NUMBER	DESCRIPTION	ITEM	QTY	PART NUMBER	DESCRIPTION
1	10	WS207G-22	Ø3/4" Nut black	8	5	WS207G-29	Ø1/4" Bar
2	8	WS207G-23	Seal gasket	9	2	WS207G-30	Steel pipex60cm black
3	7	WS207G-24	Tree links	10	2	WS207G-31	Ø6mm x 15cm Hose black
4	13	WS207G-25	O-ring	11	2	WS207G-32	Valve body
5	6	WS207G-26	Fixed Pin	12	2	WS207G-33	Ø6mm x 31cm Hose black
6	6	WS207G-27	Spray tip	13	1	WS207G-34	Ø6mm x180cm Hose black
7	11	WS207G-28	Ø3/4" Nut black	14	1	WS207G-35	Steel pipex60cm black