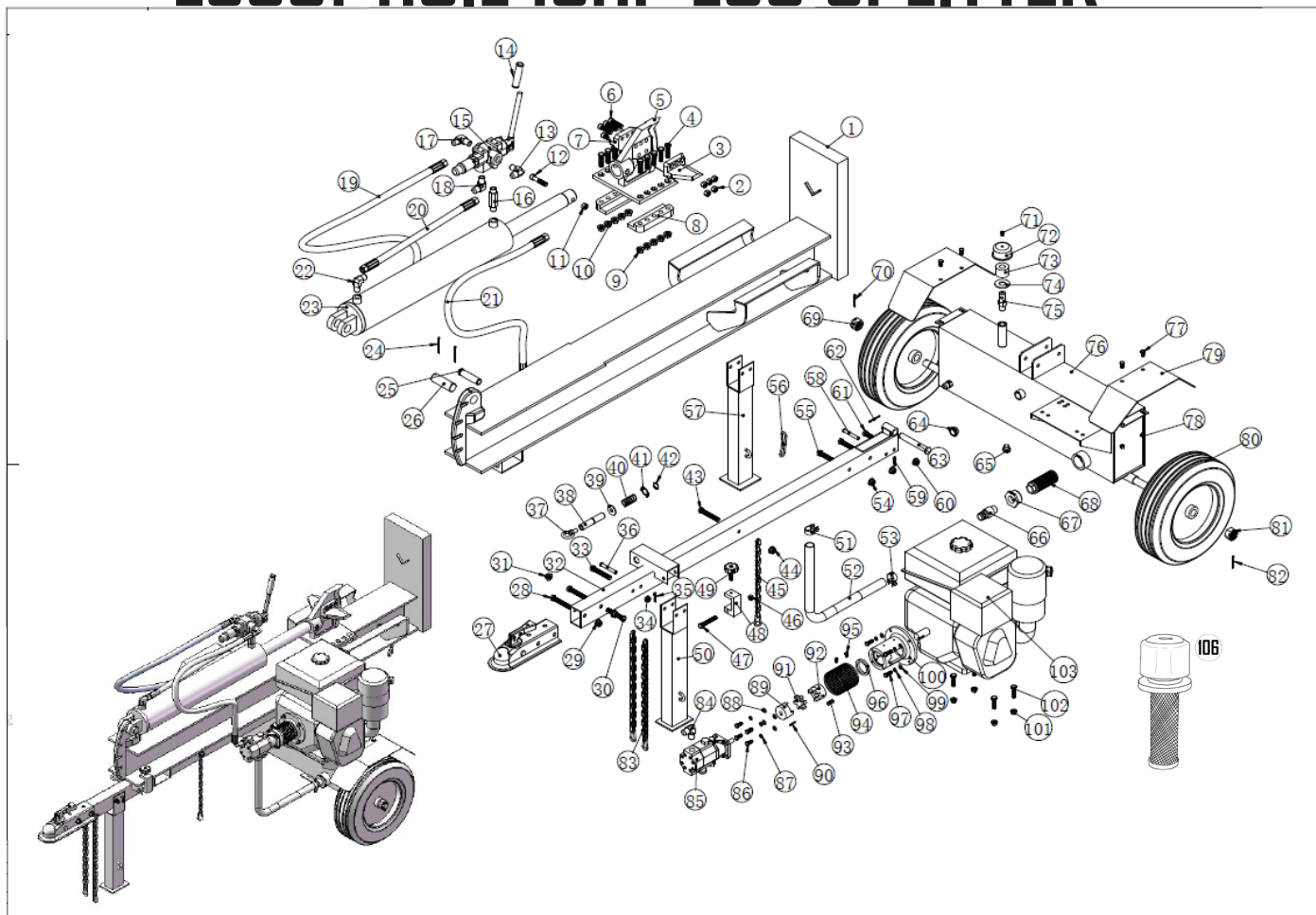




# LS001-HOIL 13HP LOG SPLITTER



LS001-1	H-BEAM
LS001-2	NUT M12
LS001-3	4-WAY WEDGE WINGS (RIGHT)
LS001-4	SPLITTING WEDGE AXE HEX BOLT M12X45
LS001-5	SPLITTING WEDGE AXE
LS001-6	HEX BOLT M12X45
LS001-7	4-WAY WEDGE WINGS (LEFT)
LS001-8	WEDGE KEEPER, RIGHT
LS001-9	SPLITTING WEDGE AXE NUT M12
LS001-10	SPLITTING WEDGE AXE NUT M12
LS001-11	NYLON NUT M12
LS001-12	HEX BOLT M12X60
LS001-13	ELBOW 3/4-1/2"
LS001-14	HANDLEBAR CONTROL LEVER CAP
LS001-15	CONTROL VALVE ASSEMBLE
LS001-16	HOSE NIPPLER 1/2-1/2"
LS001-17	ELBOW 3/4-1/2"
LS001-18	ELBOW 1/2-1/2"
LS001-19	HIGH PRESSURE HOSE 1680MM
LS001-20	HIGH PRESSURE HOSE 500MM
LS001-21	HIGH PRESSURE HOSE 1680MM
LS001-22	ELBOW 1/2-1/2"
LS001-23	HYDRULIC RAM CYLINDER
LS001-24	COTTER PIN Ø4X60
LS001-25	HANDLEBAR CAP Ø16
LS001-26	CYLINDER ANCHOR PIN Ø31X90
LS001-27	2" TOW BALL COUPLER
LS001-28	BOLT M12X80
LS001-29	NUT M12
LS001-30	BOLT OF SAFETY CHAIN M12X80

LS001-31	NUT M12
LS001-32	TOWBAR
LS001-33	BOLT M10X80
LS001-34	NUT M10
LS001-35	B TYPE BOLT Ø2X40
LS001-36	BOLT Ø10X70
LS001-37	DRAW HOOK M12X20
LS001-38	PIN ROLL Ø21X105
LS001-39	FLAT WASHER
LS001-40	DRAW SPRING
LS001-41	LOCK WASHER
LS001-42	CIRCLIPS
LS001-43	HEX NUT M10X80
LS001-44	NUT M10
LS001-45	SAFETY CHAIN
LS001-46	NYLON NUT M10
LS001-47	HEX BOLT M10X70
LS001-48	SAFETY LOCK
LS001-49	STAR BOLT M10X35
LS001-50	OUTRIGGER LEG
LS001-51	HOSE CLAMP
LS001-52	SUCTION HOSE
LS001-53	HOSE CLAMP
LS001-54	SELF-LOCKING NUT
LS001-55	HEX BOLT
LS001-56	POTHOOK
LS001-57	OUTRIGGER LEG
LS001-58	PIN ROLL
LS001-59	B TYPE BOLT
LS001-60	SELF-LOCKING NUT



LS001-61	SELF-LOCKING BOLT
LS001-62	COTTER PIN
LS001-63	TOWBAR PIN
LS001-64	SIGHT GLASS
LS001-65	DRAIN PLUG
LS001-66	INSIDE & OUTSIDE JOINTS
LS001-67	SUCTION STRAINER
LS001-68	OIL FILTER
LS001-69	AXLE NUT
LS001-70	COTTER PIN
LS001-71	CROSS-SCREW
LS001-72	PLASTIC CAP
LS001-73	SPONGE
LS001-74	FLAT GASKET
LS001-75	FIXED AXLE
LS001-76	TANK
LS001-77	HEX BOLT
LS001-78	NUT
LS001-79	MUDGUARD
LS001-80	WHEEL
LS001-81	AXLE NUT
LS001-82	COTTER PIN
LS001-83	SAFETY CHAIN
LS001-84	ELBOW
LS001-85	2-STAGE PUMP
LS001-86	HEX BOLT
LS001-87	SPRING GASKET
LS001-88	FLAT GASKET
LS001-89	PUMP COUPLING
LS001-90	FLAT KEY
LS001-91	COUPLING INSERT
LS001-92	ENGINE COUPLING
LS001-93	FLAT KEY
LS001-94	SAFETY SCREEN
LS001-95	CROSS-SCREW
LS001-96	PLASTIC SLEEVE
LS001-97	HEX BOLT
LS001-98	SPRING GASKET
LS001-99	SPRING GASKET
LS001-100	PUMP MOUNT BRACKET
LS001-101	SELF-LOCKING NUT
LS001-102	SELF-LOCKING BOLT
LS001-103	ENGINE
LS001-104	Oil tank Site glass and temperature mete
LS001-105	8.0" jockey wheel
LS001-106	Oil filler tank cap new style
YTX14-BS	Battery

LS001-HOIL

