

ELECTRIC CHAINSAW CHAIN SHARPENER 12V/240V

JJES003



ASSEMBLY AND OPERATING INSTRUCTIONS



www.chainsawspares.com.au

Operating Instructions

WARNING

There is risk of serious personal injury for chain saw operators or bystanders from improperly sharpened chainsaw chain. Read and follow all manufacturer's instructions for your chainsaw



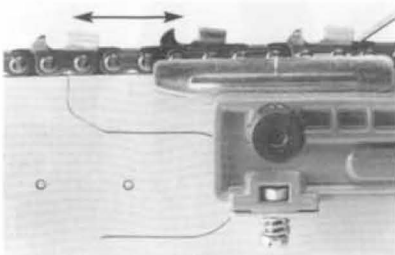
1. Position the grinder onto the chainsaw bar as illustrated in figure 23.

FIGURE 23



2. While holding the grinder assemblies guide plates in the proper position, tighten the mounting screw knob to secure the unit to the chainsaw bar. Adjust the left and right guide plate adjustment screws to the desired tension. Move the saw chain along the bar to make sure guide plates are not over-tightened (see Figure 24)

FIGURE 24



Note: Repeat steps 2 through 6 in Section B (see pages 8-9) for selecting/installing the grinding wheel.

3. With the grinder firmly mounted onto the chainsaw bar, loosen swivel positioning adjustment knob and rotate the grind head/wheel into appropriate position to grind left or right cutters (reference table 2, page 4) using the degree markings embossed onto the rear of the mounting assembly (see Figure 25).

FIGURE 25



Note: All adjustments must be made prior to applying power to the unit.

4. Position the cutter to be ground (left or right) into the appropriate grind position (see Figure 26, page 2)
5. Move the chain stop into the proper position by loosening finger wheel nut on back end of unit and sliding the stop forward or backwards depending on current position (See Figure 27, page 2).

Operating Instructions

FIGURE 26



6. Once the cutter is in the grind position and the chain stop is in the desired position, rotate the grind head/wheel down into the grind position and adjust the appropriate depth stop adjustment knob/wheel on the lower left or right side of the motor (see Figure 28).

7. With all initial adjustments made to the grinder, connect the unit to the appropriate

FIGURE 27



FIGURE 28



power source (240v electrical outlet or 12v external battery) depending on the unit being used

FIGURE 29



Operating Instructions Continued

FIGURE 30



8. Turn the unit on by pressing the on-switch located on the back side of the motor (the green oval indicator with a white dash) (see Figure 29).
9. Lower the grind head/wheel into the grind position and grind the chain cutter (see Figure 30)
10. After grind is complete, allow the grind head/wheel to raise to the upper rest position.
11. Using caution, pull the saw chain forward on the bar until the next cutter to be ground is in the appropriate position. Then repeat steps 7-10 until all cutters (left or right) have been ground.
12. Once all cutters of the same side (left or right) have been ground, repeat steps 9-11 on the opposite side cutters.
13. After all grinding actions have been completed, turn off the unit by pressing the red

oval indicator with a white circle
(see Figure 29, page 3)

Setting the Depth Gauge

1. Place a Gaugit (depth gauge setting tool) on the chain in vise over the depth gauge portion of the cutter (see Figure 31)

Note: Gaugit not included. See page 5 to locate the correct depth gauge tool for chain type.

2. With a flat file, file the first depth gauge (see Figure 32)
3. File all depth Gauges.

FIGURE 31

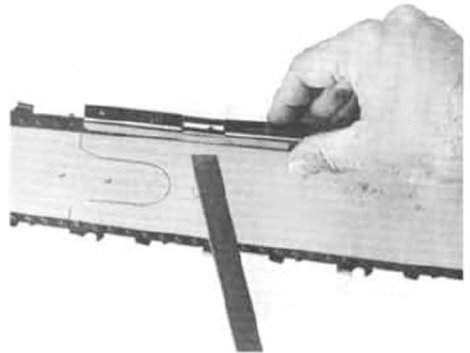
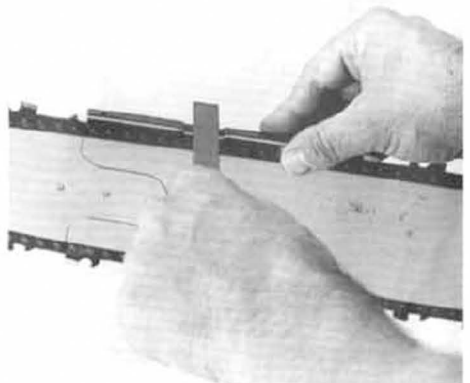










FIGURE 32



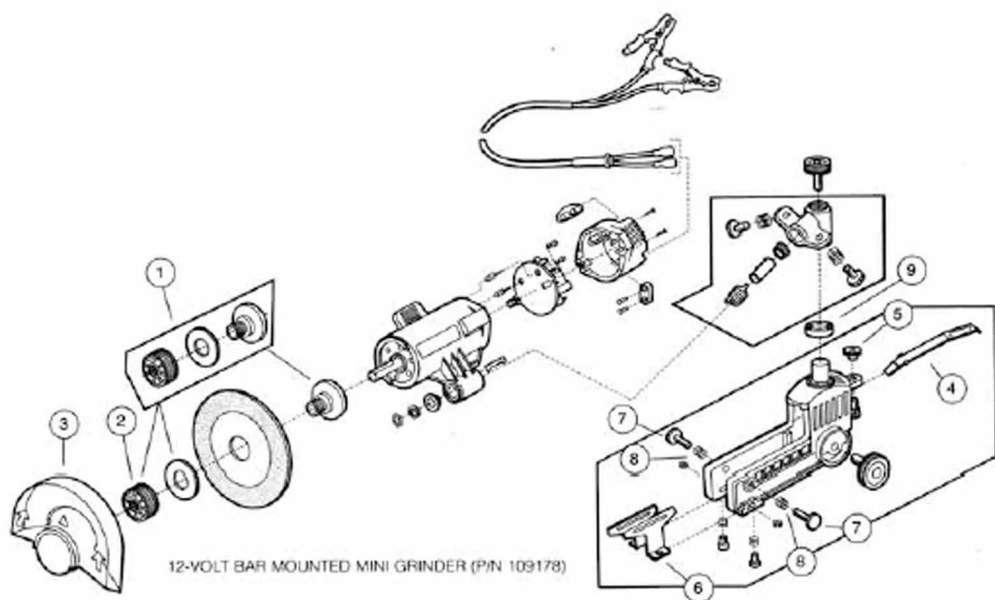
Grinding Chart

TABLE 2

CHAIN TYPE	GRINDING WHEEL WIDTH	GRINDING WHEEL P/N	FILE SIZE	FILE GUIDE P/N	DEPTH GAUGE	DEPTH GAUGE P/N	TOP PLATE GRINDING ANGLE	SIDE PLATE ANGLE
Chain Part Number								
16H, 18H	3/16"	OR4125-316	7/32"	31686	.050"	38850	35°	80°
20, 21, 22BP	3/16"	OR4125-316	3/16"	31690	.025"	31941	30°	85°
20, 21, 22JP, LP	3/16"	OR4125-316	3/16"	31690	.025"	31941	25°	60°
25AP	1/8"	OR4125-18	5/32"	37534	.025"	22290	30°	85°
27, 27A	3/16"	OR4125-316	7/32"	31686	.030"	22291	35°	80°
27R, RA	3/16"	OR4125-316	7/32"	—	.030"	22291	10°/15°	75°
33, 34, 35LG, SL	1/8"	OR4125-18	4.5mm*	31692*	.025"	31941	25°	60°
72, 73, 75V	3/16"	OR4125-316	7/32"	31686	.025"	31941	25°	60°
72AP, 72, 73, 75DP	3/16"	OR4125-316	7/32"	31686	.025"	31941	35°	85°
72, 73, 75JG, JP, LG, LP	3/16"	OR4125-316	7/32"	31686	.025"	31941	25°	60°
72, 73, 75RD	3/16"	OR4125-316	7/32"	—	.025"	31941	10°/15°	75°
90JG, SG	1/8"	OR4125-18	4.5mm	31692*	.025"	31941	30°	75°
91VG, VJ, VS, P, PJ	1/8"	OR4125-18	5/32"	37534	.025"	31941	30°	80°
91R	1/8"	OR4125-18	5/32"	37534	.025"	31941	5°	80°
95R	3/16"	OR4125-316	3/16"	—	.030"	22291	5°	75°
95VP	3/16"	OR4125-316	3/16"	31690	.025"	31941	30°	80°

Exploded Views

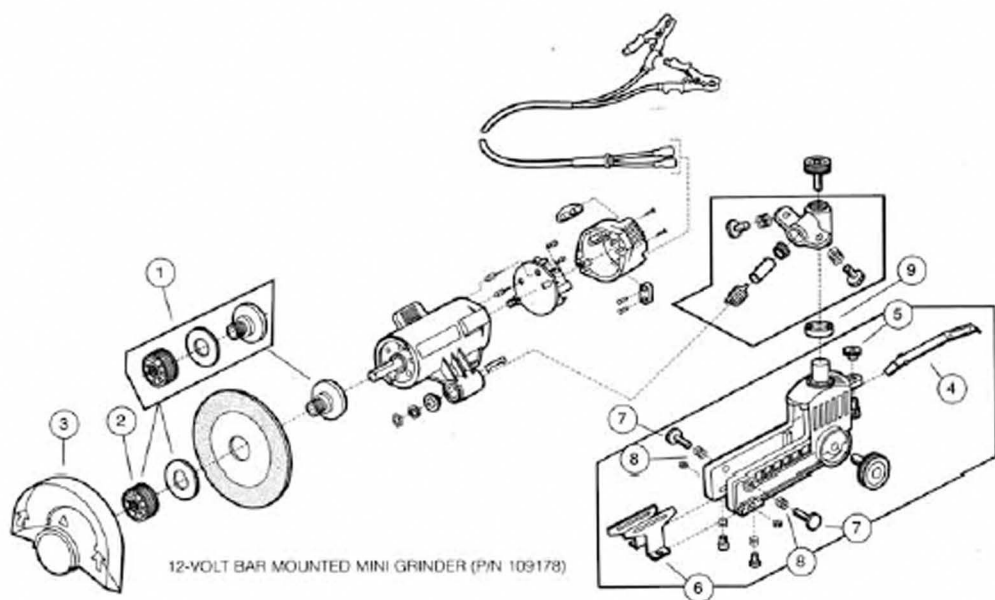
12V BAR-MOUNTED MINI GRINDER



Item No.	Description
1	ALUMINUM ARBOR RETRO FIT KIT
2	PLASTIC FLANGE, OUTER
3	PLASTIC GUARD/SHIELD
4	STOP SPRING
5	MOUNT ADJUSTMENT NUT, STOP SPRING
6	JAW PLATE
7	ADJUSTMENT KNOB, JAW PLATE/STOP
8	TENSION SPRING, JAW PLATE/STOP
9	SWIVEL EXTENSION BLOCK

Exploded Views

12V BAR-MOUNTED MINI GRINDER



Item No.	Description
1	ALUMINUM ARBOR RETRO FIT KIT
2	PLASTIC FLANGE, OUTER
3	PLASTIC GUARD/SHIELD
4	STOP SPRING
5	MOUNT ADJUSTMENT NUT, STOP SPRING
6	JAW PLATE
7	ADJUSTMENT KNOB, JAW PLATE/STOP
8	TENSION SPRING, JAW PLATE/STOP
9	SWIVEL EXTENSION BLOCK