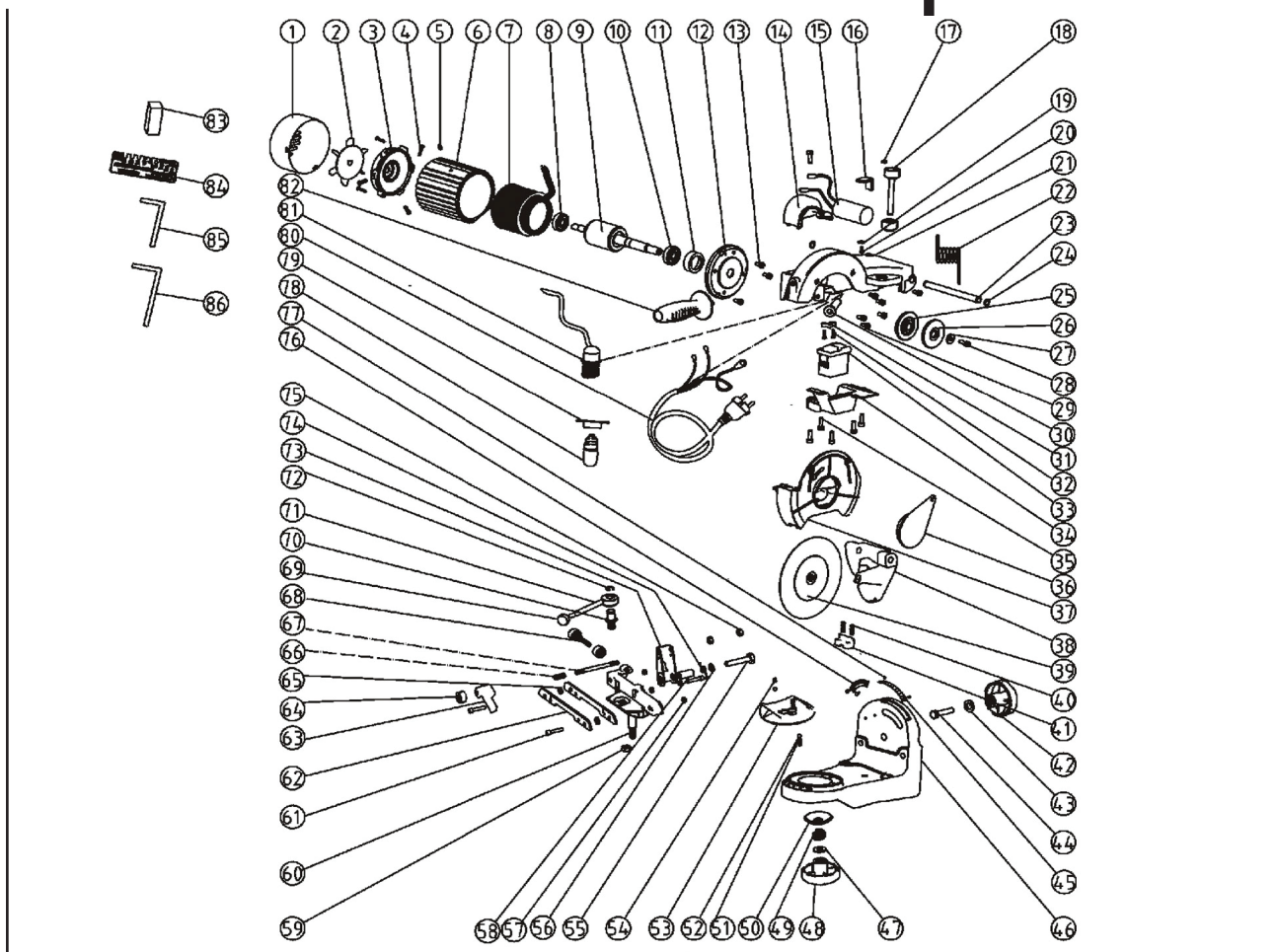




PCG-240v GRINDER Spares



PCG-240V-1	Fan cover
PCG-240V-2	Fan
PCG-240V-3	Motor cover
PCG-240V-4	Screw M4X8
PCG-240V-5	Screw M5X5
PCG-240V-6	Motor housing
PCG-240V-7	Stator
PCG-240V-8	Bearing(6200 ZZ)
PCG-240V-9	Rotor
PCG-240V-10	Bearing(6002 ZZ)
PCG-240V-11	Anti-Vibration ring
PCG-240V-12	Motor cover
PCG-240V-13	Screw M4X12
PCG-240V-14	Lamp cover
PCG-240V-15	Capacitor
PCG-240V-16	Fixed position piece
PCG-240V-17	Screw M3X8
PCG-240V-18	Set Seew M8X66
PCG-240V-19	Washer Ø5
PCG-240V-20	Screw M5X8
PCG-240V-21	Swing arm
PCG-240V-22	Spring
PCG-240V-23	Axis
PCG-240V-24	Limiting ring
PCG-240V-25	Flange
PCG-240V-26	Flange
PCG-240V-27	Washer
PCG-240V-28	Screw M6x16
PCG-240V-29	Screw M5X12
PCG-240V-30	Cable tube

PCG-240V-31	Cable clamp
PCG-240V-32	Serew M4X12
PCG-240V-33	Switch
PCG-240V-34	Switch enclosure
PCG-240V-35	Serew M5X20
PCG-240V-36	Lateral guard
PCG-240V-37	Grinding disk guard
PCG-240V-38	Joint
PCG-240V-39	Grinding disk
PCG-240V-40	Screw M3X8
PCG-240V-41	Chain wheel clamp
PCG-240V-42	Clamp wheel
PCG-240V-43	Washer
PCG-240V-44	Bolt M10X40
PCG-240V-45	Nameplate
PCG-240V-46	Base plate
PCG-240V-47	WasherØ10XØ20X2
PCG-240V-48	Clamp wheel M10
PCG-240V-49	SpringØ2XØ18X10
PCG-240V-50	Washer
PCG-240V-51	SpringO0.6X05X16
PCG-240V-52	Steel ballO5
PCG-240V-53	Rotary table II
PCG-240V-54	SpringØ0.6XØ5X10
PCG-240V-55	Screw M8X45
PCG-240V-56	WasherØ8XØ16X1.5
PCG-240V-57	Nut M5X4
PCG-240V-58	Sheath
PCG-240V-59	Nut M8X6
PCG-240V-60	Rotary table I